

Phoenix VFR Frequencies

Airports				Phoenix Approach	
Ak-Chin	(A39) AWOS 126.9	TPA 2100 CTAF 122.9		From the North	Below 7500' 120.7 At/Above 7500' 119.2
Buckeye	(BXK) AWOS 119.625	TPA 2000 CTAF 122.975		From the East	Below 10,500' 124.9 At/Above 10,500' 126.8
Casa Grande	(CGZ) AWOS 132.17	TPA 2500 CTAF 122.7		From South East	Below 7500' 123.7 At/Above 7500' 124.1
Chandler	(CHD) ATIS 128.325 Ground 124.4	TPA 2200 Tower NW 126.1 Tower SE 124.6		From South West	Below 8500' 123.7 At/Above 8500' 126.8
Deer Valley	(DVT) ATIS 126.5 Ground 118.0 Unicom 122.95	TPA 2500 Tower N 120.2 Tower S 118.4 Clearance Del 123.9		From the West	Below 7500' 123.7 At/Above 7500' 124.1
Falcon Field	(FFZ) ATIS 118.25 Ground 121.3	TPA 2200 Tower NW 119.7 Tower SE 124.6		Luke SATR Approach	
				From The	North 118.15
					South 125.45

Phoenix VFR Frequencies

Airports		
Gateway (Williams) (IWA)		TPA 2600
	ATIS 133.5	Tower E 124.7
	Ground 128.25	Tower W 120.6
	Unicom 122.85	Clearance Del 118.8
Glendale (GEU)		TPA 2100
	ATIS 119.425	Tower 121.0
	Ground 118.0	
Goodyear (GYR)		TPA 1968
	ATIS 118.35	Tower 120.1
	Ground 121.7	Unicom 122.95
Pegasus (5AZ3)		TPA 2400
		CTAF 123.0
Scottsdale (SDL)		TPA 2200
	ATIS 118.6	Tower 119.9
	Ground 121.6	Unicom 122.95
		Clearance Del 124.8
Stellar (P19)		TPA 2004
		CTAF 122.975

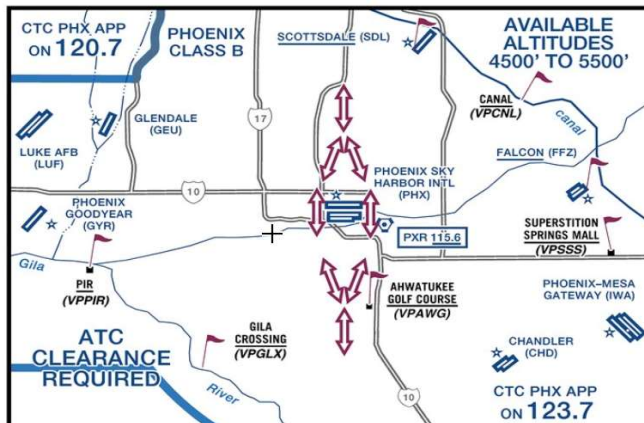
Special Airspace

VFR TRANSITION ROUTE
(ATC CLEARANCE REQUIRED)
ALTITUDE ASSIGNED BY ATC



EAST/WEST ROUTE

VFR ONLY



REQUIREMENTS OF FAR 91.215 AND 91.131 SHALL BE MET

EAST/WEST ROUTE: The VFR Transition Route over Phoenix Sky Harbor Intl (PHX) is based upon the runway in use. If unfamiliar with the transition, advise ATC and expect radar vector.

EAST ROUTE: Altitude as assigned by ATC. Aircraft should fly between the Hohokam Expressway (State Route 143) and the approach end of Runways 26 and 25R/25L.

WEST ROUTE: Altitude as assigned by ATC. Aircraft should fly between Interstate 10 and the approach end of Runways 8 and 7R/7L.

REMAIN CLEAR OF THE CLASS B UNTIL RECEIVING SPECIFIC ATC APPROVAL TO ENTER

Phoenix Practice Areas

On the	North	122.75
	South	122.85
	SouthWest	128.925
	West of BXX	130.625